

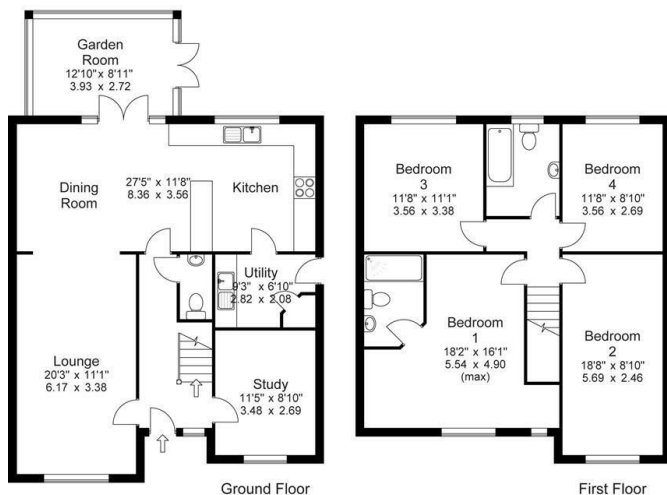


24 Savile Royd Villas, Savile Royd, Halifax, West Yorkshire, HX1 2EY

Per Month £2,500 Per Month

- : Highly Desirable & Convenient Location
- : 5 Good Sized Bedrooms (Master en Suite)
- : Spacious Modern Fully Fitted Dining Kitchen
- : Viewing Essential
- : Spacious Extended Family Home
- : Garden Room Extension
- : Garage & Landscaped Gardens (extra land purchased by vendors)
- : Attractive Accommodation
- : Downstairs Cloakroom, & Utility Room
- : Close To Outstanding Schools

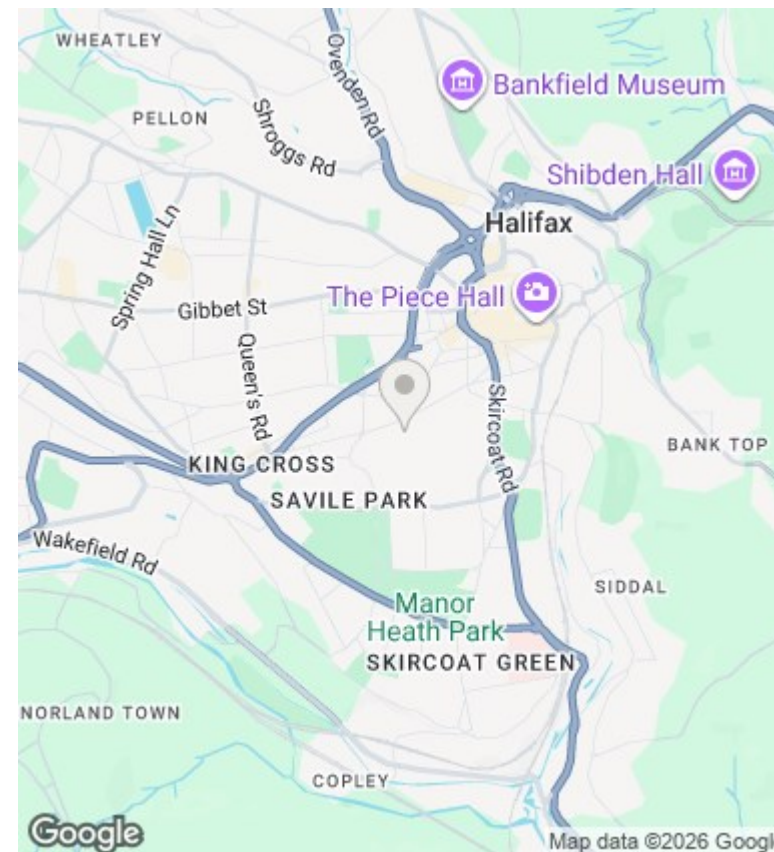
Approx Gross Floor Area = 1748 Sq. Feet
= 162.4 Sq. Metres



For illustrative purposes only. Not to scale.

Lower Ground Floor Ground Floor First Floor Second Floor

For illustrative purposes only. Not to scale.



Directions

SAT NAV HX1 2EY

Viewings

Viewings by arrangement only. Call 01422 349222 to make an appointment.

Council Tax Band

F

EPC Rating:

Energy Efficiency Rating		Current	Potential
Very energy efficient - lower running costs			
(92 plus) A			
(81-91) B			
(69-80) C			
(55-68) D			
(39-54) E			
(21-38) F			
(1-20) G			
Not energy efficient - higher running costs			
England & Wales		EU Directive 2002/91/EC	